

# CONTEC® GmbH

## Systems for Concrete



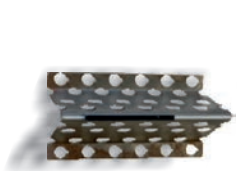
© Contec GmbH 2016



## Product Catalogue

[www.contecgmbh.com](http://www.contecgmbh.com)

بازرگانی قربانعلی زاده  
نماینده‌گی انحصاری کاننک آلمان  
02188553271-09123378505



**Screed Rail  
"Combi-Form"**



**Poker  
Vibrators**



**Bull  
Floats**



**Beams and  
Screeds SVF**



4



5



6 - 7



8 - 9

# Index



**Beams and  
Screeds SVM**



**Roller  
Screed**



**Power  
Trowels**



**Double  
ride-on  
Trowels**



**Spreader  
Waggon**

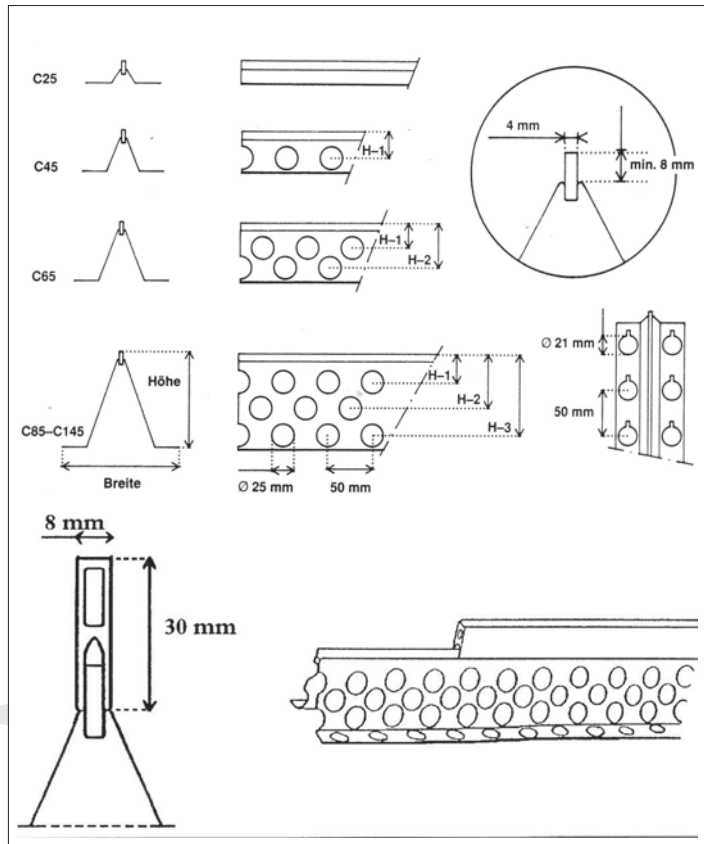
10 - 11

12 - 13

14 - 20

21

22

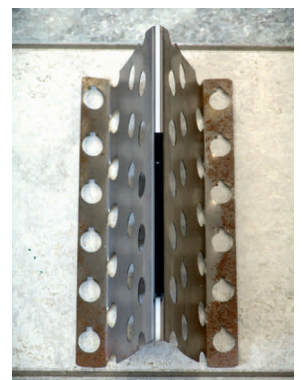
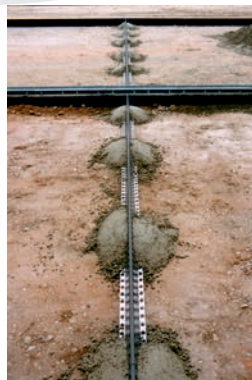


## Screed Rail 'combi-form'



### Combi-Form Contractor Advantages:

- can be assembled immediately prior to concreting
- is suitable for all beddings
- precise height for more accurate calculations
- high flatness tolerances in conjunction with beams
- saves the construction of and dismantling of additional systems
- ensures stronger floor joints
- saves labour and production costs
- reduces the risk of industrial injury
- easy transport and low weight
- saves green waste
- consistent level floors
- minimises maintenance costs



## PVD mechanical poker vibrator



Mechanical light weight flexible shaft pokers.

3-part system consisting of drive unit (230 V / 2.0 kW 4.8 kg) and vibrator flexible shaft.

Immersion vibrator diameter in 25, 32, 48, and 58 mm - flexible shaft available in 1, 2, 3 and 4 m versions.

## PVE electric poker vibrator and PVCE convertor



Electric pokers PVE for connection to a frequency converter.

Immersion vibrator with 5 m hose and 10 m cable (standard)  
42 Volt / 200 Hz.

Bottle diameter in 38, 50, 58 and 65 mm.

Electrical converters PVCE 2.5 available in 230V and 400V with 2.5 kVA and 35 A with 2 slots.  
Weight only 21 kg.

## PVEL Poker vibrator with integrated Frequency Convertor



Electric internal vibrator with integrated frequency converter for connection to 230V mains.

Immersion vibrator with 5 m hose and 15 m cable (standard).

Motor with 42 Volt / 200 Hz output frequency / 1.5 kW and 12,000 rpm.

Immersion vibrator diameter in 38, 50, 58 and 65 mm.  
Switch is contained in special absolute tight and impact-resistant aluminum-plastic housing.

### Technical Data

Working width: 2.00 m

Power: 8,500 rpm (petrol engine)

11,000 rpm (electric engine)

Engine: 4-Stroke-Honda or 230 V

Weight: 17 kg / 15 kg

### **BFP-HAL**



### Technical Data

Working width: 1.80 bis 4.85 m

Power: 1.3 PS Honda GX 35

Weight-drive unit: 13 kg

Vibration unit in Aluminium housing

Handle and profile made of chromed steel and aluminium alloys

### **Westernscreed**



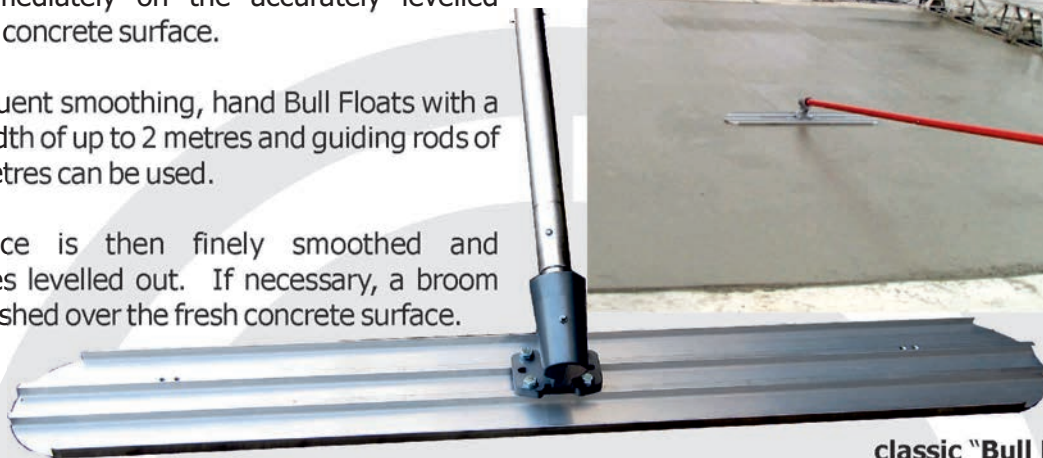
بازرگانی قربانعلی زاده  
نماینده انحصاری کانتک آلمان  
02188553271-09123378505

### HAND BULL FLOAT

After application of the screed, finishing work begins immediately on the accurately levelled compacted concrete surface.

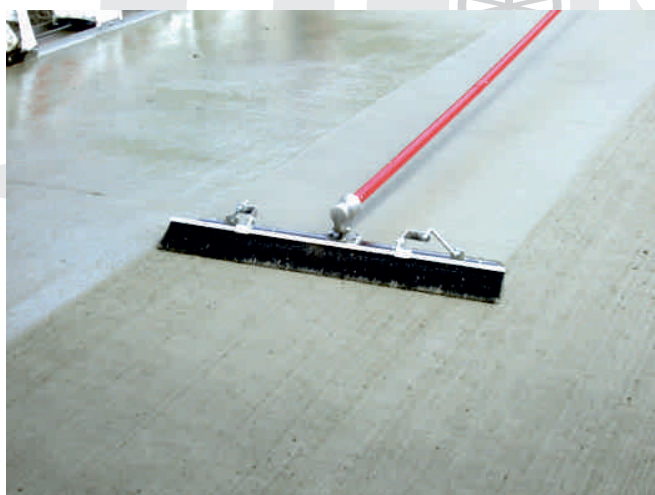
For subsequent smoothing, hand Bull Floats with a working width of up to 2 metres and guiding rods of up to 12 metres can be used.

The surface is then finely smoothed and irregularities levelled out. If necessary, a broom finish is brushed over the fresh concrete surface.



classic "Bull Float"

Available in working widths of 1.20 and 1.50 m with rounded corners. Weight 5.6 / 6.6 kg

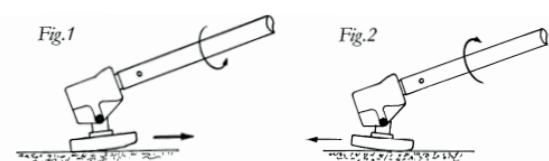
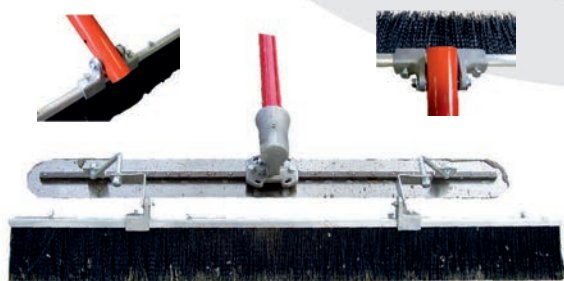


### BULL FLOAT WITH BRUSH

includes handle extension for the subsequent smoothing of fresh concrete and the insertion of a brush stroke.

Bull float working width 1.20 m, (120x 12 cm)  
Weight without extension handle 12kg.

Brush attachment with 12cm bristle length including set of 3 piece extension rods.  
(L=1.8 m rods)  
with spring snap close on the rod end.

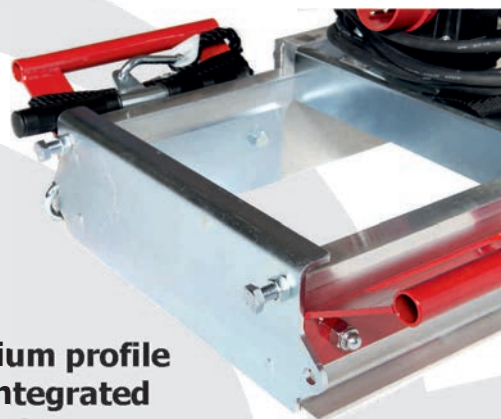


Mode of operation / swivel joint





lifting brackets



Aluminium profile  
with integrated  
tensioning rope

بازرگانی قربانعلی زاده  
نماینده انحصاری کانکت آلمان  
02188553271-09123378505

## Technical Data

Maschinenbau & Entwicklungstechnik GmbH

Electric Engine	400 Volt
Power	450 W
Engine speed (motor shaft)	3,000 rpm
Centrifugal	490 N/m
Protective class	IP 65
Max. working width	7.20 m
Weight of vibrating unit	15 kg
Weight of frame 3.20 m	32 kg
Weight of frame 4.20 m	41 kg
Weight of frame 5.20 m	47 kg
Weight of frame 6.20 m	57 kg
Weight of frame 7.20 m	70 kg
Sound pressure level LWA	106 dB(A)
Sound pressure	95 dB(A)
Hand vibration according to ISO 5349 in fresh concrete	4.5 m/s <sup>2</sup>
Compaction depth	Up to 15 cm
Advanced rate	Ca. 1 m/min



- robust, lightweight frame with lifting brackets
- working widths up to 7.20 m
- eveness according to DIN 18.202
- adjustable vibration
- easy to transport, quick and easy installation without special tools
- less cleaning and maintenance
- maintenance-free electric- motor-drive
- exact height guidance with cantilever guage system
- compaction up to 15 cm bei 2,800 vibrations per minute

Maschinenbau & Entwicklungstechnik

for use in bridge formwork

"solid track"



slabs in pre-cast concrete



lightweight concrete



بازرگانی قربانعلی زاده  
نماینده انحصاری کانکتک آلمان  
02188553271-09123378505

**A system with countless possibilities and various accessories to cope with all your building projects**



**adjustable at each joint  
of the frame elements**



**100% compatible with any  
series built after 1993**



**electric winch (optional)**



**petrol drive**



**toothed belt drive  
with belt tensioner**

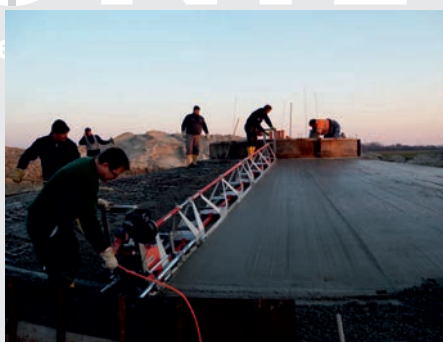
### Maschinenbau **Technical Data** Technik

Engine electric / petrol	400 Volt 16 A / Honda GX200
Power	2.2 kW / 4.8 kW (6.5 HP)
Engine speed (motor shaft)	2,830 rpm / 2,300 rpm
Centrifugal	500 N/m
Protection class	IP 65
Max. working width	25 m
Weight of drive gable / incl. E-winch	61 / 63 kg
Weight of end gables	25 kg
Weight 0.50 m / 0.75 m / 1.00 m	22 kg / 24 kg / 26 kg
Weight 2.00m	42 kg
Weight 3.00m	64 kg
Dimension drive (L x W x H)	300 x 400 x 950 mm
Dimension end gables (L x W x H)	150 x 400 x 950 mm
Dimensions Section (B x H)	400 x 556 mm
Sound level LWA	106 dB(A)
Sound pressure	95 dB(A)
Hand vibration according to ISO 5349 in fresh concrete	4.5 m/s <sup>2</sup>

Screed in robust construction-kit-system. Proven and tested for over 20 years on construction sites all over Germany. From 2013 new up-to-date design which meets EU-Safety directives



**Achieving absolute flat surfaces in road, bridge and utility projects**



- lightweight, self-supporting aluminum truss structure
- working widths up to 25 m evenness according to DIN 18 202
- consistent level through integrated winches guarantees optimum compaction
- optional electric winch propulsion saves on operating personnel
- easy to transport, easy to install without special tools
- low cleaning and maintenance
- aluminum struts with powder coating
- all galvanized steel components, drive shafts in stainless steel
- kink-joint setting on the frame shock +/- 5%
- guard on rotating parts (drive shaft), reduced vibration levels to operator handle according to the most recent regulations
- electric or petrol engines
- power transmission via toothed drive belt
- exact height guidance via cantilever arm and gauge system
- compaction up to 18 cm at 2,800 oscillations per minute.
- 100% compatible with all SVE, Vario and Variant systems from 1993

بازرگانی قربانعلی زاده  
نمایندگی انحصاری کاننک آلمان  
**02188553271-09123378505**

Canal Embankments up to 60 °/ Ramps



## Roller Screed

Achieves absolutely flat surfaces in road construction



### Technical Data



petrol version

Motor drive unit	400 Volt / 16 A alternative Honda-petrol-engine
Power	5.5 kW / 13 HP
Pump flow rate	11 l/min / max. 250 Bar
Working width	Up to 6 m (more lengths on request)
Roll diameter	168 mm
Drive unit weight (incl. cart)	220 kg
Roller weight	20 kg per metre



### Roller Screeds - the CONTEC System

The use of roller screeds in the concrete construction industry has been employed for many years. More recently there have been an increasing number of new and interesting applications and procedures on the market.

#### Mode of operation:

The CONTEC System involves a high performance hydraulic drive unit (5.5 kW) which can turn a steel roller up to 6 m wide and 168 mm in diameter (up to 250 rpm) against freshly poured concrete.

Guide tracks or an individually adjustable gauge system determine the levelling depth. The concrete is then compacted and the granulation is forced to the surface.

#### Application:

The use of sliding friction instead of vibration means the system is perfect for slopes where the deployment of conventional beams and screeds are impossible - e.g. river and canal embankments, steep roofing surfaces, ski jumps and such.

Apart from this, individual concrete structures such as special screeds – drain concrete and sub layers are made possible without the use of vibration, i.e. without segregation processes and levelling.

Also in road construction, the use of the CONTEC System in levelling and smoothing after beam and screed applications has proved to be very successful.

The additional use of the roller screed corrects unevenness, thickness or ripples and removes slurry from the surface. The result is an absolute even, compacted concreted area.

The construction of the hydraulic drive unit places particular importance on robustness and easy maintenance.

The steel roller is exceptionally low maintenance and can be cleaned easily in minutes with a brush and water or a high pressure cleaner.

Maschinenbau & Entwicklungstechnik



Light, robust trowel with rolling ring for edging and for small areas - either as petrol or electric version



Petrol version

### Equipment

- robust and permanently lubricated worm gear
- reliable and environmentally friendly 4-stroke Honda engine or 230 volt electric motor
- adjustable height on handle
- foldable handle for transportation
- lifting brackets and protective frame in standard or "Heavy Duty" version
- high working speed
- increased protection and rolling ring - ideal for edging
- steel parts galvanized for maximum corrosion protection
- blade adjustment for rotating or in "Quick Pitch" version
- press-lock for easy blade change without tools
- transport wheels optional

بازرگانی قربانعلی زاده  
نمایندگی انحصاری کانتک آلمان  
02188553271-09123378505

**230 Volt Electric Version with speed control**  
**- ideal for operation in closed areas**



**'Quick-Pitch'**  
quick wing adjustment  
on request

**Technical Data TR 600 P / E**

Motor Petrol / Electric	Honda GX160 / 230 Volt 50 Hz
Power	5.5 HP / 1.5 kW
Engine Speed (motor shaft)	3,600 rpm / 2,810 rpm
Working Speed	50 – 150 rpm / 130 rpm
Tank capacity	3.1 liter / -
Weight (standard version with lifting brackets and long draw bar)	65 kg / 63 kg
Weight transport wheels	2.6 kg
Diameter protective ring	600 mm
Working diameter	595 mm (disc) 581 mm (blade)
Handle range	1640 mm
Height of working position	980 mm
Max. height of drawbar for transport	870 mm
Noise level, LWA	94 dB(A) / 93 dB(A)
Noise pressure level (measured at operator ear)	83 dB(A) / 70 dB(A)
Hand vibration according to ISO 5349 on fresh concrete with the use of levelling disc	5.2 m/s <sup>2</sup> / 1.4 m/s <sup>2</sup>

**Light, robust Power Trowel - in petrol or electric versions for smaller areas and screeds**



**„Heavy-Duty“ version incl. wheels for transport**

بازرگانی قربانعلی زاده  
نماینده انحصاری کانتک آلمان  
**02188553271-09123378505**

## **Equipment**

- robust and permanently lubricated worm gear
- reliable and environmentally friendly 4 stroke -Honda engine or 400 Volt electric engine with speed control
- height adjustable handle, extremely long
- folding handle for transportation
- lifting brackets and protective frame in standard or 'heavy duty' version
- high working speed
- steel parts galvanised for maximum corrosion protection
- blade adjustment for rotation in "Quick- Pitch" version
- press-lock for easy blade change without tools
- optional transport wheels

**400 Volt electric version with speed control**  
**- ideal for operation inclosed areas**



**"Quick-Pitch"**  
**quick blade adjustment**  
**on request**

بازرگانی قربانعلی زاده  
نماینده انحصاری کاننک آلمان  
**02188553271-09123378505**

### **Technical Data TR 750 P/ E**

Engine petrol / electric	Honda GX200 / 400 Volt with speed control
Power	6.5 HP / 2.2 kW
Engine speed (motor shaft)	3,600 rpm
Working speed	50 – 150 rpm / 40 – 135 rpm
Tank capacity	3.1 liter / -
Weight (with lifting brackets and long handle)	71 kg / 72 kg
Weight transport wheels	3 kg
Diameter protective ring	750 mm
Working diameter disc / blade	745 mm / 728 mm
Range of handle long / short	1778 mm / 1740 mm
Height in working postion	1065 mm
Max. height of handle for transport	1446 mm
Noise level, LWA	96 dB(A) / 94 dB(A)
Noise level (measured at operator ear)	84 dB(A) / 77 dB(A)
Hand vibration according to ISO 5349 on fresh concrete with the use of levelling disc	5.8 m/s <sup>2</sup> / 1.4 m/s <sup>2</sup>

**Ideal for working in closed spaces**

**electric version**

**Blade adjustment "Quick- Pitch"  
available on request**



**folding handle**

**Technical Data TR 950 P/E**

Engine petrol / electric	Honda GX200-270 / 400 Volt with speed control
Power petrol / Electric	6.5 HP / 9.0 HP / 2.4 kW Electric
Engine speed (motor shaft)	3,600 rpm
Working speed	50 – 150 rpm / 60 – 120 rpm
Tank capacity	3.1 liter / -
Weight (with lifting brackets and longer handle)	93 kg / 90 kg
Weight of transport wheels	3 kg
Diameter of protective ring	950 mm
Working diameter disc / blade	945 mm / 935 mm
Handle range long / short	2325 mm / 1976 mm
Height of working position	1065 mm
Max. height of handle for transport	1446 mm
Noise level, LWA	97 dB(A)
Noise level (measured at operator's ear)	85 / 83 dB(A) / 77 dB(A)
Hand vibration according to ISO 5349 on fresh concrete with the use of levelling disc	6.3 m/s <sup>2</sup> / 1.4 m/s <sup>2</sup>

**Ideal for working in closed spaces**

**Extra long handle allows easy, safe working  
with minimum effort even when working  
with problematic concrete or screeds**



**foldable handle**

بازرگانی قربانعلی زاده  
نماینده‌گی انحصاری کاننک آلمان  
**02188553271-09123378505**

## Equipment

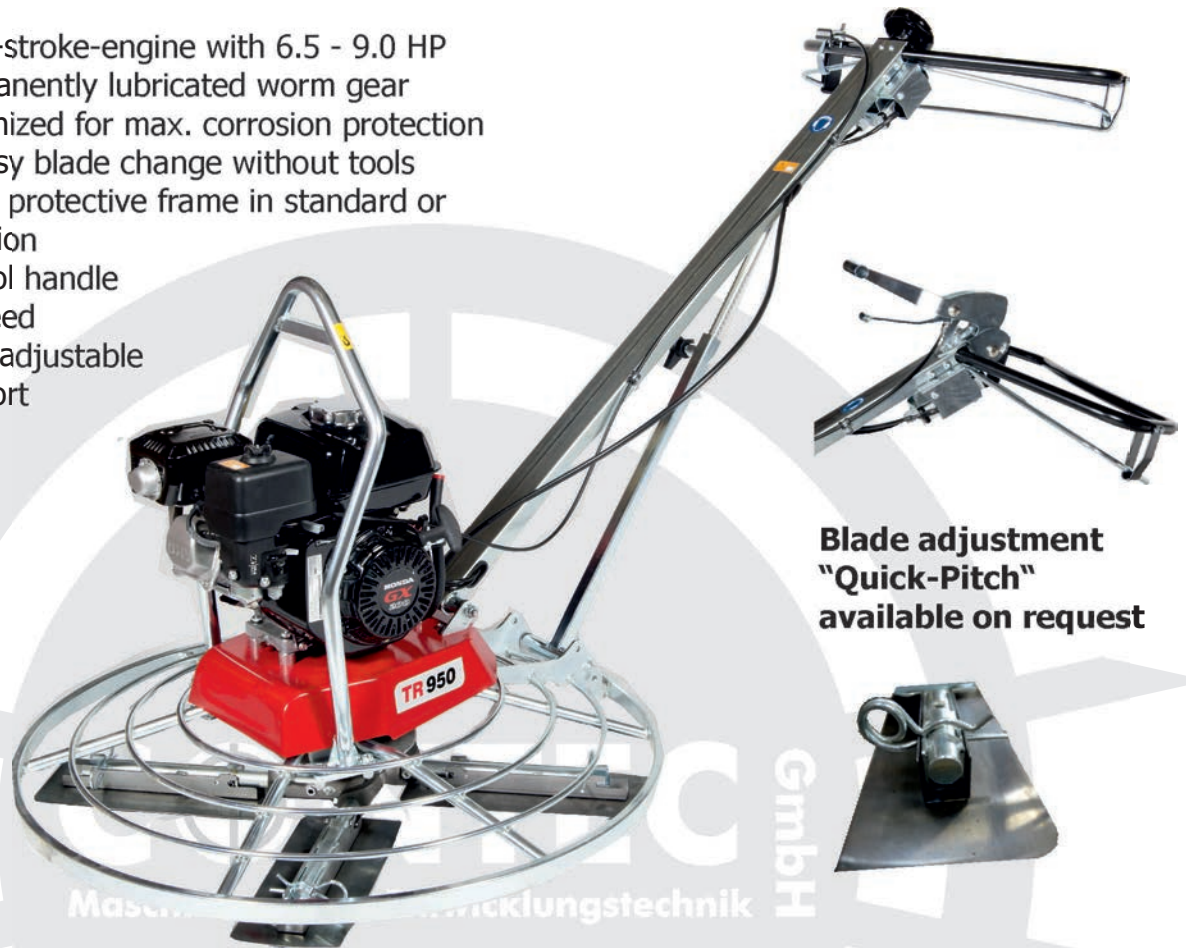
- reliable Honda-4-stroke-engine with 6.5 - 9 HP / or maintenance-free 400 Volt electro engine
- robust and permanently lubricated worm gear
- height adjustable, extra long or short retractable handle
- lifting brackets and protective frame in standard or 'heavy duty' version
- high working speed
- steel parts galvanized for maximum corrosion protection
- blade adjustment for rotation in "Quick-Pitch" version
- press-lock for easy blade change without tools
- optional transport wheels
- ergonomic control handle which includes all controls and manned operation

## Power Trowel TR 950 P /SH

### Version with shorter handle

#### Equipment

- reliable Honda-4-stroke-engine with 6.5 - 9.0 HP
- robust and permanently lubricated worm gear
- steel parts galvanized for max. corrosion protection
- press-lock for easy blade change without tools
- lifting brackets & protective frame in standard or 'heavy duty' version
- ergonomic control handle
- high working speed
- handle vertically adjustable for easier transport



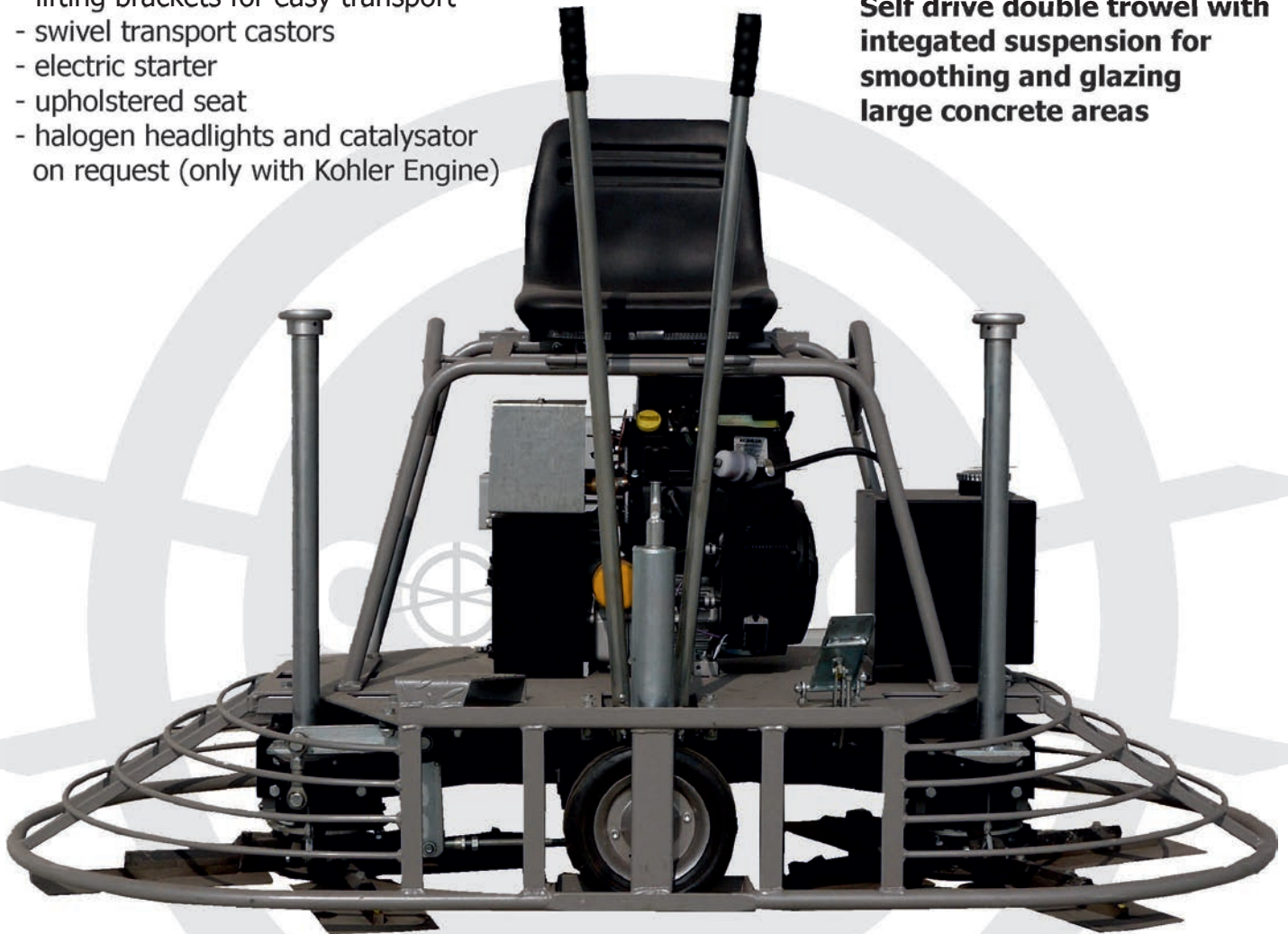
#### Technical Data

Petrol engine	Honda GX200-270
Power	6.5 HP / 9.0 HP
Engine speed (motor shaft)	3,600 rpm
Working speed	50 – 150 rpm
Tank capacity	3.1 liter
Weight (Standard version with lifting brackets )	93 kg
Weight of transport wheels	3 kg
Diameter of protective ring	950 mm
Working diameter disc / blade	945 mm / 935 mm
Handle range	1976 mm
Height of working position	adjustable
Max.height of handle for transport	1446 mm
Noise level, LWA	97 dB(A)
Noise pressure level (measured at operator's ear)	85 / 83 dB(A) / 77 dB(A)
Hand vibration according to ISO 5349 on fresh concrete with the use of levelling disc	6.3 m/s <sup>2</sup> / 1.4 m/s <sup>2</sup>

## Equipment

- powerful worm gear
- 8 smoothing blades
- lifting brackets for easy transport
- swivel transport castors
- electric starter
- upholstered seat
- halogen headlights and catalysator on request (only with Kohler Engine)

**Self drive double trowel with integrated suspension for smoothing and glazing large concrete areas**



بازرگانی قربانعلی زاده  
نماینده انحصاری کانکت آلمان  
**02188553271-09123378505**

## Technical Data

Petrol Engine	Kohler Command / Honda
Power	25 HP / 24 HP
Engine speed (motor shaft)	3,600 rpm
Working speed	50 – 150 rpm
Tank capacity	15 Liter
Weight	330 kg
Dimensions	133 x 202 x 101 cm (H x L x B)

- easy loading with wide chute with slit blade for packing
- upper roll distributes hard material uniformly in the feed chute
- quick adjustment of dosage with locking mechanism on handle
- optimal support and weight distribution by broad driving grid roller
- secure sprinkling even with problematic concrete and screed conditions
- uniform sprinkling in both directions



## Technical Data

<b>Weight</b>	<b>36 kg</b>
<b>Working width</b>	<b>830 mm</b>
<b>Dimensions L/B/H</b>	<b>920 / 960 / 810 mm</b>
<b>Max. Quantity material per m<sup>2</sup> and single operation</b>	<b>3 kg</b>
<b>Capacity of feeder shaft</b>	<b>60 kg</b>

# CONTEC<sup>®</sup>

## Maschinenbau & Entwicklungstechnik

**Constantly developing innovative systems for concrete**

Since 1995 German machine manufacturer **CONTEC GmbH** have been offering the concrete, renovation and screed construction industries innovative and versatile machines. Shot-blasters, milling and grinding machines for surface preparation and concrete renovation including the appropriate dust collection systems are developed and manufactured at our factory in Alsdorf, in the Westerwald.

In 2006, together with our sales and service partners we acquired the German distribution of machinery for the field of concrete technology.

The foundation for this new division are techniques developed in Germany and Scandinavia and proven for many years.

The programme includes bull floats, beams and screeds, power trowels, roller screeds and spreader waggons.

Together with our experienced technicians, we can offer professional advice to contractors in the planning and concreting of large concrete surfaces such as bridges, roads and utility projects, the development of specific proposals and the training of the personnel in dealing with the specially developed technology directly on site.

At the same time the **CONTEC** office staff take care of a quick supply of spare, wear and tear parts for our customers at home and abroad.

Much of the machinery, parts and equipment are kept in stock in Alsdorf or can be customized and manufactured quickly according to your needs.

We offer you:

- innovative, well designed machine technology which meets the most recent EU safety standards
- new and further cutting edge developments in terms of shot blasting, milling and diamond grinding technology
- specific solutions for the concreting of road and industrial floor surfaces

Excellent cooperation and honest and fair dealings with long-standing partners and customers secure our success for the future!

Simply call us and ask us for advice if you need professional help with solutions for your construction project - we are happy to help!



بازرگانی قریب‌انعلی زاده  
نماینده‌گی انحصاری کانکت آلمان

02188553271-09123378505